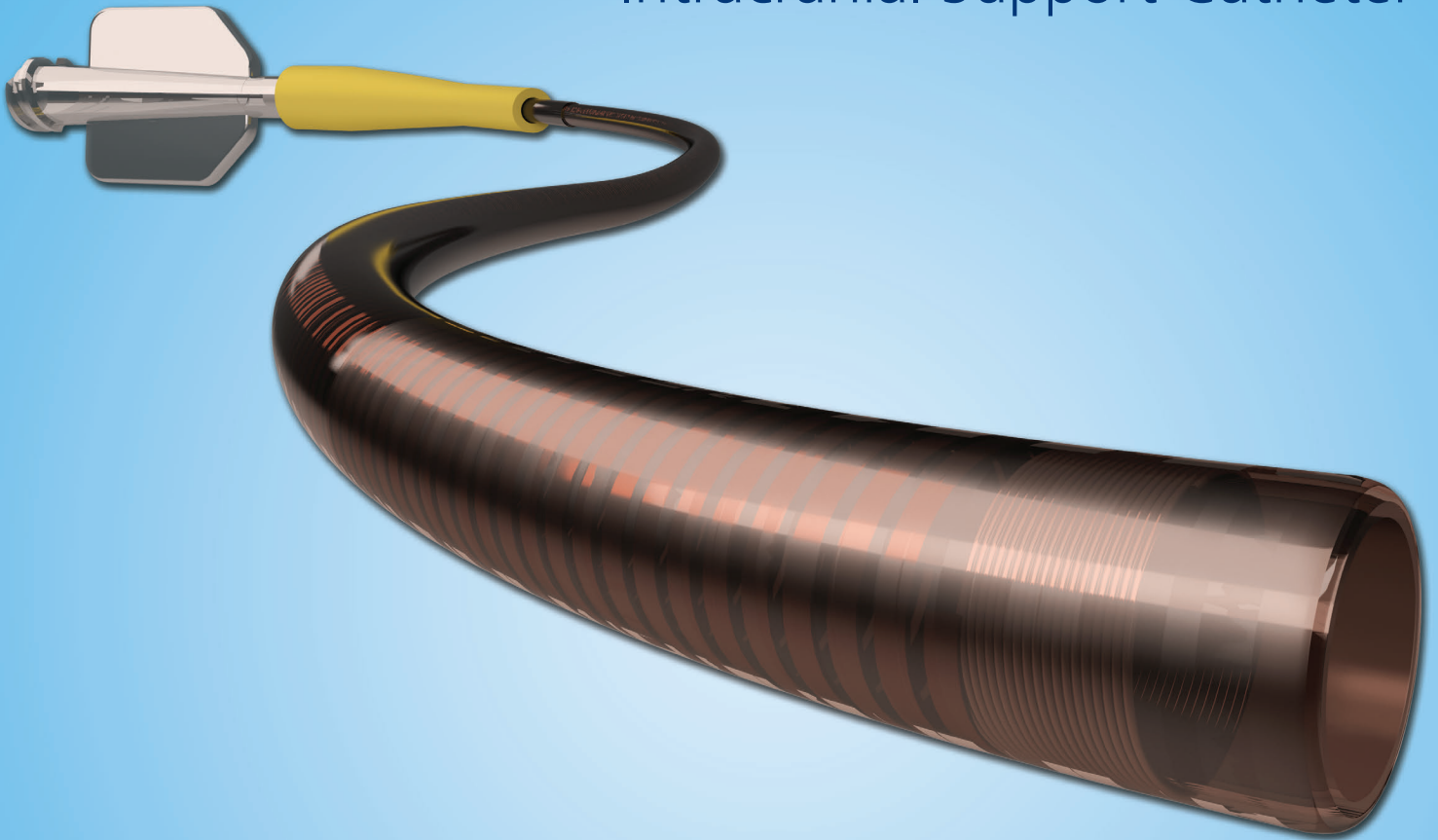


# Navien™ A+

## Intracranial Support Catheter



*When Procedural Support really matters*



**COVIDIEN**

*positive results for life™*

## DURABLE

ovalization resistance<sup>1,2</sup>

## TRACKABLE

low tracking force<sup>1,2</sup>

## LARGE ID

in 5F & 6F catheters<sup>1,2</sup>

Maintains patent lumen in tortuosity for smooth micro catheter manipulation<sup>1,2</sup>

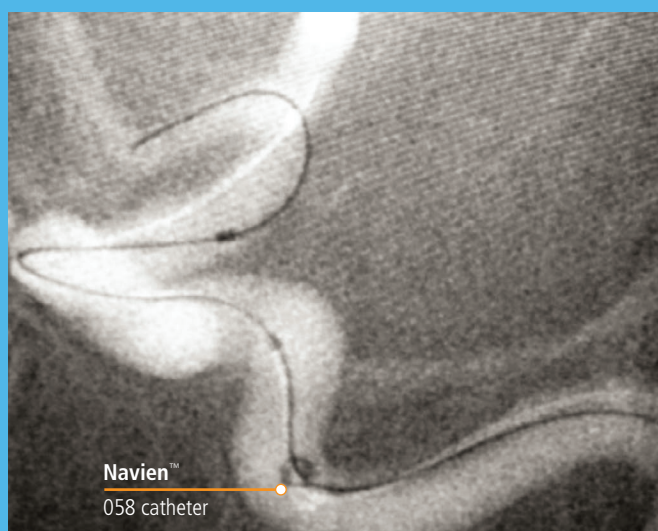
Bringing support point distal provides stability for:

- Ease of catheter manipulation and less micro catheter kick out<sup>1,2</sup>

Allows easy device and micro catheter manipulation during:<sup>1,2</sup>

- Balloon-assisted coiling
- Stent-assisted coiling
- Pipeline™ embolization device
- Contrast runs

**Coiling —  
6 x 4 Multilobular  
Aneurysm with the  
Navien™ 058 catheter**



*Covidien owned image*

<sup>1</sup> Covidien Internal testing - 5F Guide Catheter Marketing Support Testing TRNV-FD3157 Rev A 2012 - N=3

<sup>2</sup> Covidien Internal testing - 6F Guide Catheter Marketing Support Testing TRNV-FD3140 Rev B 2012 - N=3

<sup>3</sup> See last page for a list of catheters tested

## LARGE ID

in 5F & 6F catheters<sup>1,2</sup>

Allows capture of large clot and greatest aspiration for Solitaire™ 2 Device procedures<sup>1,2</sup>

## TRACKABLE

low tracking force<sup>1,2</sup>

Allows access close to thrombus for stable clot crossing, Solitaire™ 2 Device delivery and local aspiration<sup>1,2</sup>

## DURABLE

ovalization resistance<sup>1,2</sup>

Ensures high aspiration even in tortuosity. Aspiration drops when catheters kink; the Navien™ catheter has great kink resistance.<sup>1,2</sup>

Stroke —  
Navien™ A+ 058  
Intracranial Support  
Catheter in M1 for  
Stroke with  
the Solitaire™ 2 Device



*Covidien owned image*

<sup>1</sup> Covidien Internal testing - 5F Guide Catheter Marketing Support Testing TRNV-FD3157 Rev A 2012 - N=3

<sup>2</sup> Covidien Internal testing - 6F Guide Catheter Marketing Support Testing TRNV-FD3140 Rev B 2012 - N=3

<sup>3</sup> See last page for a list of catheters tested

## TRACKABLE

low tracking force<sup>1,2</sup>

Enhances distal access bringing support point closer to treatment site, increasing stability for device delivery and deployment<sup>1,2</sup>

## LARGE ID

in 5F & 6F catheters<sup>1,2</sup>

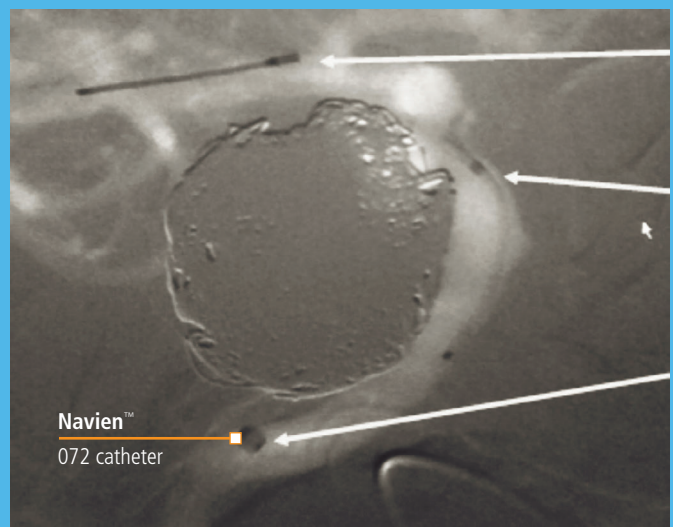
Allows for better roadmaps and placement of multiple catheters<sup>1,2</sup>

## DURABLE

ovalization resistance<sup>1,2</sup>

Ensures patent lumen in guide catheter allowing unrestricted movement of micro catheter<sup>1,2</sup>

## Flow Diversion — Giant Recurrent ICA Aneurysm with the Navien™ A+ 072 Intracranial Support Catheter



*Covidien owned image*

<sup>1</sup> Covidien Internal testing - 5F Guide Catheter Marketing Support Testing TRNV-FD3157 Rev A 2012 - N=3

<sup>2</sup> Covidien Internal testing - 6F Guide Catheter Marketing Support Testing TRNV-FD3140 Rev B 2012 - N=3

<sup>3</sup> See last page for a list of catheters tested

# Navien™ A+ Intracranial Support Catheter brings superior benefits compared to the tested catheters<sup>1,2,3</sup>

Navien™ A+ intracranial support catheter - the large inner diameter is providing more clinical treatment options than the tested catheters<sup>1,2,3</sup>

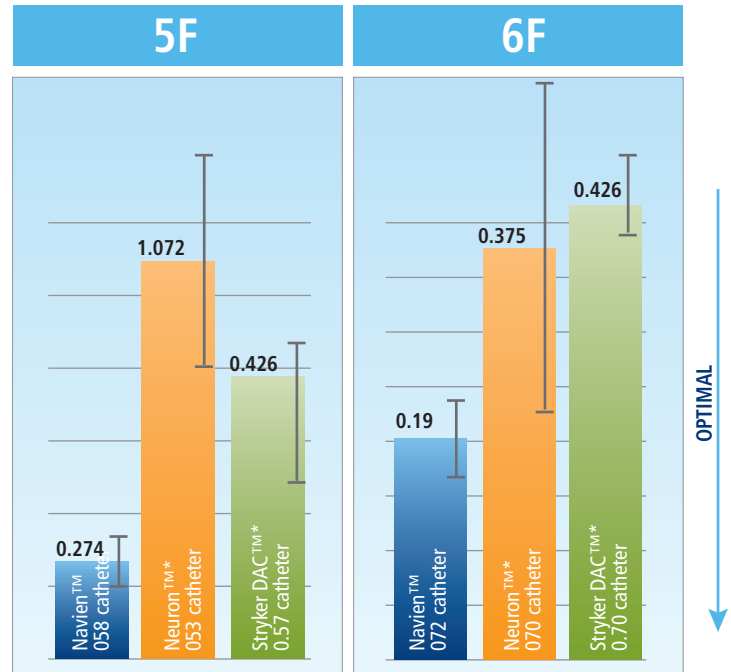
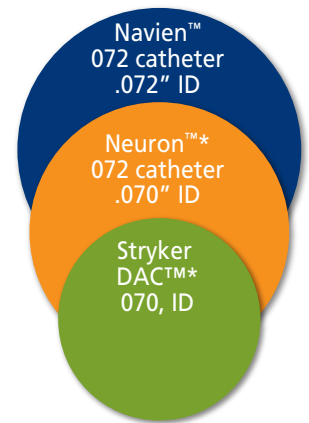
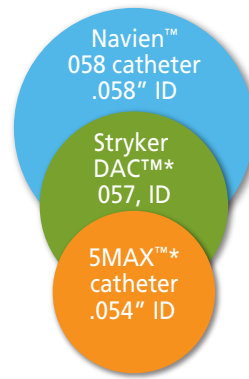
- Higher flow rate enables better contrast injections and visualization<sup>1,2,3</sup>
- Higher aspiration rates<sup>1,2,3</sup>
- Capture of larger pieces of clot<sup>1,2,3</sup>
- More flexibility, allowing the use of different device combinations<sup>1,2,3</sup>

## Better trackability for an optimized treatment platform compared to the tested catheters<sup>1,2,3</sup>

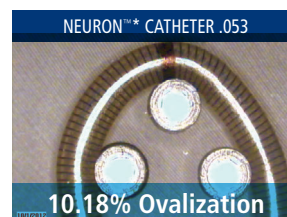
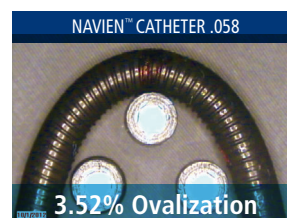
- Distal support that reaches further than the tested catheters<sup>1,2,3</sup>
- Support closer to the treatment site for more stability than the tested catheters during device delivery and deployment<sup>1,2,3</sup>

## Better durability for optimized performance than the tested catheters<sup>1,2,3</sup>

- Great kink resistance maintains patent lumen for device delivery<sup>1,2,3</sup>
- Great aspiration flow rate through unkinked catheter<sup>1,2,3</sup>



AVERAGE TRACKING FORCE: Final 3 Cm<sup>1</sup>



<sup>1</sup> Covidien Internal testing - 5F Guide Catheter Marketing Support Testing TRNV-FD3157 Rev A 2012 - N=3

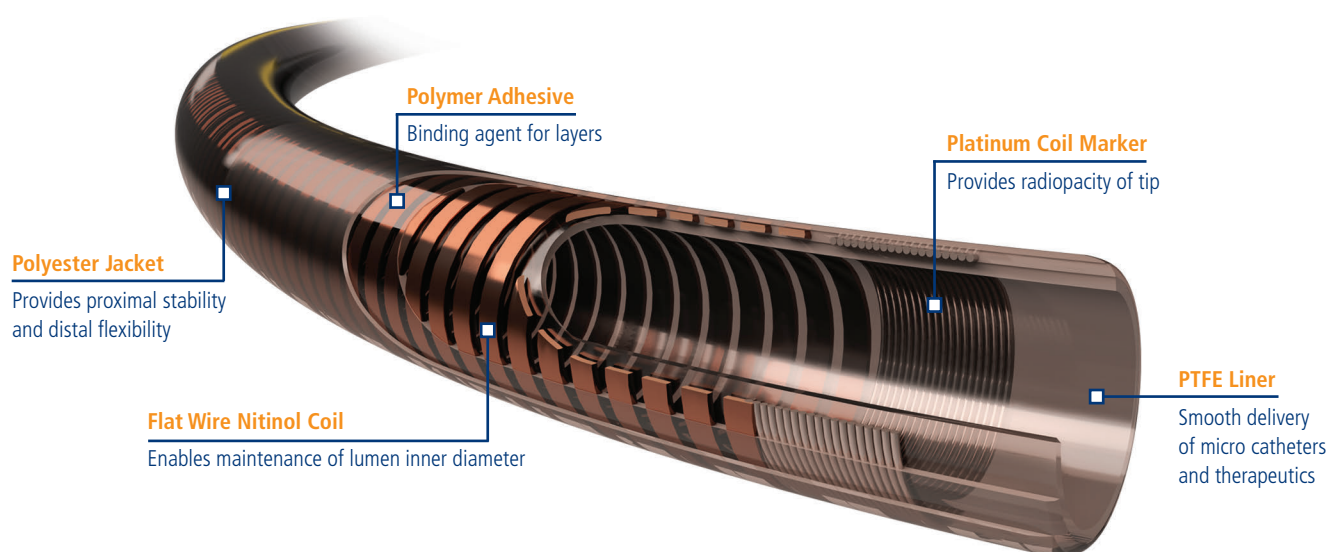
<sup>2</sup> Covidien Internal testing - 6F Guide Catheter Marketing Support Testing TRNV-FD3140 Rev B 2012 - N=3

<sup>3</sup> See last page for a list of catheters tested

\* When used as indicated with the Solitaire™ FR device



## Navien™ A+ Intracranial Support Catheter Device Details†



## Navien™ A+ Intracranial Support Catheter Ordering Information

Product Catalogue Number	Outer Diameter (Fr/inch)	Inner Diameter (inch)	Total Length (cm)	Tip Shape	Wire Compatibility (inch)
RFXA058-105-08	5.2/0.070 max	0.058	105	Straight	0.035/0.038
RFXA058-115-08	5.2/0.070 max	0.058	115	Straight	0.035/0.038
RFXA058-125-08	5.2/0.070 max	0.058	125	Straight	0.035/0.038
RFXA058-130-08	5.2/0.070 max	0.058	130	Straight	0.035/0.038
RFXA072-95-08	6.3/0.084 max	0.072	95	Straight	0.035/0.038
RFXA072-95-08MP	6.3/0.084 max	0.072	95	Multi-Purpose 25°	0.035/0.038
RFXA072-105-08	6.3/0.084 max	0.072	105	Straight	0.035/0.038
RFXA072-115-08	6.3/0.084 max	0.072	115	Straight	0.035/0.038
RFXA072-125-08	6.3/0.084 max	0.072	125	Straight	0.035/0.038
RFXA072-105-08MP	6.3/0.084 max	0.072	105	Multi-Purpose 25°	0.035/0.038
RFXA072-115-08MP	6.3/0.084 max	0.072	115	Multi-Purpose 25°	0.035/0.038
RFXA072-125-08MP	6.3/0.084 max	0.072	125	Multi-Purpose 25°	0.035/0.038
RFXA072-130-08	6.3/0.084 max	0.072	130	Straight	0.035/0.038
RFXA072-130-08MP	6.3/0.084 max	0.072	130	Multi-Purpose 25°	0.035/0.038

Distal Flexible Length for all sizes = 8cm.

† Reference DWGRFX058-XXX-XX and DWGRFX072-XXX-XX

### INDICATIONS:

The Solitaire™ 2 revascularization device is designed for use in the flow restoration of patients with ischemic stroke due to large intracranial vessel occlusion. Patients who are ineligible for intravenous tissue plasminogen activator (IV t-PA) or who fail IV t-PA therapy are candidate for treatment.

The Navien™ intracranial catheter is indicated for the introduction of interventional / diagnostic devices into the peripheral, coronary, and neuro vasculature. The Navien™ intracranial catheter is also indicated for the removal/ aspiration of fresh, soft emboli and thrombi from selected blood vessels in the arterial system, including neurovasculature.

1 Covidien Internal testing - 5F Guide Catheter Marketing Support Testing TRNV-FD3157 Rev A 2012 - N=3

- Navien™ 058, N=3
- Envoy™\*, N=3
- Chaperon™\*, N=3
- DAC™\* 057, N=3
- Neuron™\* 053, N=3
- Flexor™\*, N=3
- 5MAX™\*, N=3

2 Covidien Internal testing - 6F Guide Catheter Marketing Support Testing TRNV-FD3140 Rev B 2012 - N=3

- Navien™ 072, N=3
- Envoy™\*, N=3
- FargoMax™\*, N=3
- DAC™\* 070, N=3
- Chaperon™\*, N=3
- 4MAX™\*, N=3
- Flexor™\*, N=3

Indications, contraindications, warnings and instructions for use can be found in the product labeling supplied with each device.

COVIDIEN, COVIDIEN with logo, Covidien logo and "positive results for life" are U.S. and internationally registered trademarks of Covidien AG. <sup>TM</sup>\* Trademark of its respective owner. Other brands are trademarks of a Covidien company. © 2014 Covidien. 76983-001 (B) MAR/14



**COVIDIEN**

**COVIDIEN**  
106-108 RUE LA BOÉTIE  
75008 PARIS  
FRANCE

+33 156 88 59 10 [T]  
+33 156 88 59 11 [F]

[WWW.COVIDIEN.COM](http://WWW.COVIDIEN.COM)