

STENT GRAFTS



Endurant™ II/IIIs

AAA Stent Graft System

Features*

Complete conformability, optimal seal

- M-shaped proximal stents provide wall apposition and a short sealing zone
- Suprarenal stent anchor pins provide secure fixation
- Limb stent and stent spacing reduce kinking

Total control, consistent precision

- Tip capture mechanism allows for precise positioning adjustments
- Back-end thumb wheel provides controlled release of the suprarenal stent and anchor pins
- Improved radiopacity provides increased visibility†
- Four proximal markers assist in accurate deployment
- E-shaped marker assists with A/P orientation

Durable build, dependable performance

- Ultra-high molecular weight polyethylene sutures are three times stronger than surgical sutures
- High-density multifilament polyester graft material provides low porosity
- Electropolished nitinol stents improve fatigue resistance

Expanded anatomical customization with Endurant™ IIIs

- Endurant™ IIIs complements the Endurant™ II AAA Stent Graft System

Low profile, easy access

- Low profile and hydrophilic coating enhance access and trackability
- Flexible, kink-resistant delivery system facilitates stent graft delivery

* Test data on file at Medtronic. Bench test results may not be indicative of clinical performance.

† Contralateral gate marker



Endurant™ II/IIs

AAA Stent Graft System

ENDURANT™ II PRODUCT CODE DESCRIPTION

ET	B	F	23	13	C	124	EE	18
----	---	---	----	----	---	-----	----	----

Catheter Outer Diameter

Delivery System
EE - Endurant™ II

Total Covered Length

Distal Design
C - Closed Web

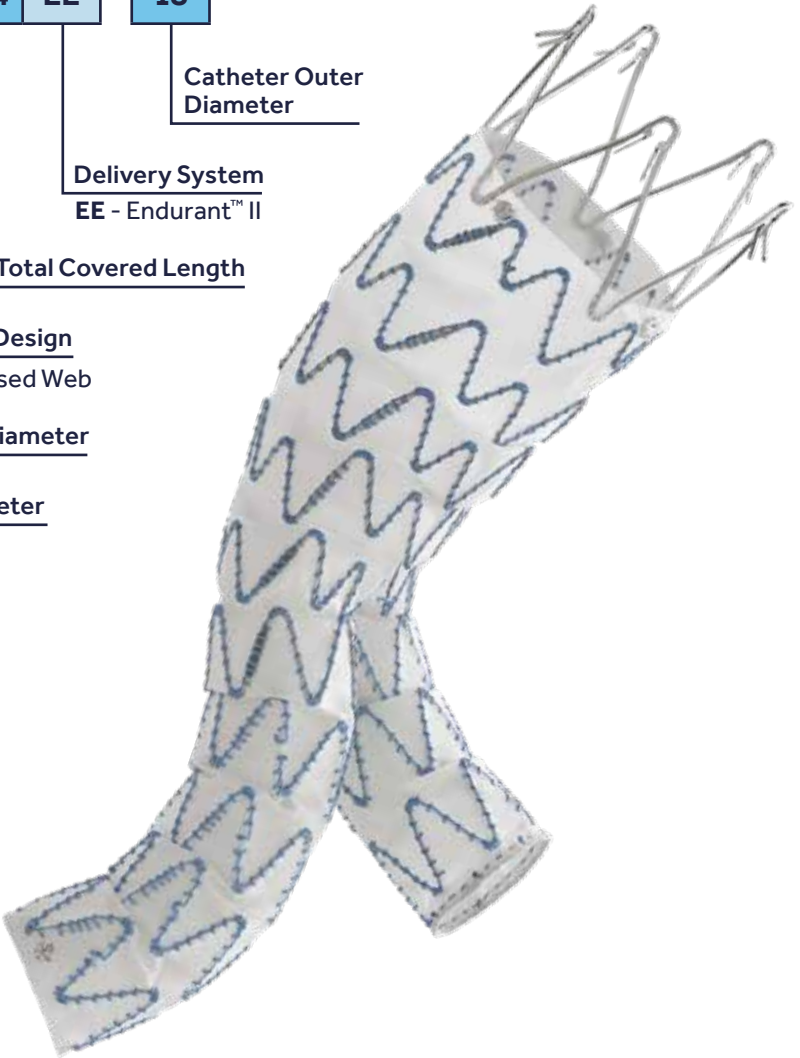
Distal Graft Diameter

Proximal Graft Diameter

Proximal Design
F - FreeFlo
W - Open Web

Device Configuration
B - Bifurcated
L - Contralateral Iliac Limb
E - Iliac Extension
C - Aortic Extension (Cuff)
T - Abdominal Tube
U - Aorto-Uni-Iliac (AUI)

Product Name
ET - Endurant™ II
ES - Endurant™ IIs



ENDURANT™ IIs BIFURCATIONS

Product Code						
	Proximal Graft Diameter (mm)	Distal Graft Diameter (mm)	Distal Design	Total Covered Length (mm)	Delivery System	Catheter Outer Diameter (F)
ESBF	23	14	C	103	EE	18
ESBF	25	14	C	103	EE	18
ESBF	28	14	C	103	EE	18
ESBF	32	14	C	103	EE	20
ESBF	36	14	C	103	EE	20

Endurant™ II/IIs

AAA Stent Graft System

ENDURANT™ II BIFURCATIONS

Product Code						
	Proximal Graft Diameter (mm)	Distal Graft Diameter (mm)	Distal Design	Total Covered Length (mm)	Delivery System	Catheter Outer Diameter (F)
ETBF	23	13	C	124	EE	18
ETBF	23	13	C	145	EE	18
ETBF	23	13	C	166	EE	18
ETBF	23	16	C	124	EE	18
ETBF	23	16	C	145	EE	18
ETBF	23	16	C	166	EE	18
ETBF	25	13	C	124	EE	18
ETBF	25	13	C	145	EE	18
ETBF	25	13	C	166	EE	18
ETBF	25	16	C	124	EE	18
ETBF	25	16	C	145	EE	18
ETBF	25	16	C	166	EE	18
ETBF	28	13	C	124	EE	18
ETBF	28	13	C	145	EE	18
ETBF	28	13	C	166	EE	18
ETBF	28	16	C	124	EE	18
ETBF	28	16	C	145	EE	18
ETBF	28	16	C	166	EE	18
ETBF	28	20	C	124	EE	18
ETBF	28	20	C	145	EE	18
ETBF	28	20	C	166	EE	18
ETBF	32	16	C	124	EE	20
ETBF	32	16	C	145	EE	20
ETBF	32	16	C	166	EE	20
ETBF	32	20	C	124	EE	20
ETBF	32	20	C	145	EE	20
ETBF	32	20	C	166	EE	20
ETBF	36	16	C	145	EE	20
ETBF	36	16	C	166	EE	20
ETBF	36	20	C	145	EE	20
ETBF	36	20	C	166	EE	20

Endurant™ II/IIs

AAA Stent Graft System

LIMBS*

Product Code								
	Proximal Graft Diameter (mm)	Distal Graft Diameter (mm)	Distal Design	Total Covered Length (mm)	Delivery System	Catheter Outer Diameter (F)	Total Contralateral Covered Length with EII / EIIIs Bifurcated†	Total Ipsilateral Covered Length with EIIs Bifurcated‡
ETLW	16	10	C	82	EE	14	136	155
ETLW	16	10	C	93	EE	14	147	166
ETLW	16	10	C	124	EE	14	178	177–197
ETLW	16	10	C	156	EE	16	210	209–229
ETLW	16	10	C	199	EE	16	253	252–272
ETLW	16	13	C	82	EE	14	136	155
ETLW	16	13	C	93	EE	14	147	166
ETLW	16	13	C	124	EE	14	178	177–197
ETLW	16	13	C	156	EE	16	210	209–229
ETLW	16	13	C	199	EE	16	253	252–272
ETLW	16	16	C	82	EE	14	136	135–155
ETLW	16	16	C	93	EE	14	147	146–166
ETLW	16	16	C	124	EE	14	178	177–197
ETLW	16	16	C	156	EE	16	210	209–229
ETLW	16	16	C	199	EE	16	253	252–272
ETLW	16	20	C	82	EE	16	136	155
ETLW	16	20	C	93	EE	16	147	166
ETLW	16	20	C	124	EE	16	178	177–197
ETLW	16	20	C	156	EE	16	210	209–229
ETLW	16	20	C	199	EE	16	253	252–272
ETLW	16	24	C	82	EE	16	136	155
ETLW	16	24	C	93	EE	16	147	166
ETLW	16	24	C	124	EE	16	178	177–197
ETLW	16	24	C	156	EE	16	210	209–229
ETLW	16	24	C	199	EE	16	253	252–272
ETLW	16	28	C	82	EE	16	136	155
ETLW	16	28	C	93	EE	16	147	166
ETLW	16	28	C	124	EE	16	178	177–197
ETLW	16	28	C	156	EE	16	210	209–229
ETLW	16	28	C	199	EE	16	253	252–272

* The limb mates with the AUI stent graft on the ipsilateral side.

† These calculations assume the minimum 30 mm overlap between the bifurcated stent graft and the contralateral iliac limb per the Endurant™ II Stent Graft System Instructions For Use (IFU). When using the 124 mm length bifurcated stent graft, subtract 10 mm from total contralateral covered length with Bifurcated.

‡ The 3 - 5 stent overlap is available only with select limbs. Please refer to the Instructions For Use for more information. The contralateral iliac limb per the Endurant™ II Stent Graft System Instructions For Use. When using the 124 mm length bifurcated stent graft, subtract 10 mm from total contralateral covered length with Bifurcated.

Endurant™ II/IIs

AAA Stent Graft System

ILIAC EXTENSIONS

Product Code						
	Proximal Graft Diameter (mm)	Distal Graft Diameter (mm)	Distal Design	Total Covered Length (mm)	Delivery System	Catheter Outer Diameter (F)
ETEW	10	10	C	82	EE	14
ETEW	13	13	C	82	EE	14
ETEW	20	20	C	82	EE	16
ETEW	24	24	C	82	EE	16
ETEW	28	28	C	82	EE	18

AORTIC EXTENSIONS

Product Code						
	Proximal Graft Diameter (mm)	Distal Graft Diameter (mm)	Distal Design	Total Covered Length (mm)	Delivery System	Catheter Outer Diameter (F)
ETCF	23	23	C	49	EE	18
ETCF	25	25	C	49	EE	18
ETCF	28	28	C	49	EE	18
ETCF	32	32	C	49	EE	20
ETCF	36	36	C	49	EE	20

ABDOMINAL TUBES

Product Code						
	Proximal Graft Diameter (mm)	Distal Graft Diameter (mm)	Distal Design	Total Covered Length (mm)	Delivery System	Catheter Outer Diameter (F)
ETTF	23	23	C	70	EE	18
ETTF	25	25	C	70	EE	18
ETTF	28	28	C	70	EE	18
ETTF	32	32	C	70	EE	20
ETTF	36	36	C	70	EE	20

AUI

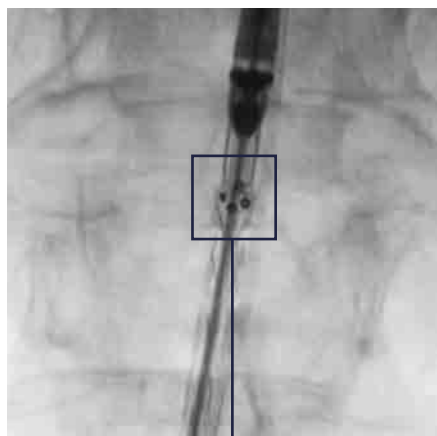
Product Code						
	Proximal Graft Diameter (mm)	Distal Graft Diameter (mm)	Distal Design	Total Covered Length (mm)	Delivery System	Catheter Outer Diameter (F)
ETUF	23	14	C	102	EE	18
ETUF	25	14	C	102	EE	18
ETUF	28	14	C	102	EE	18
ETUF	32	14	C	102	EE	20
ETUF	36	14	C	102	EE	20


Endurant™ II/IIIs

AAA Stent Graft System

PLACEMENT AND SIZING GUIDELINES

Use the proximal radiopaque markers to position the top edge of the graft material.




E-SHAPED
MARKER ASSISTS
WITH A / P
ORIENTATION

RADIOPAQUE MARKERS

For the contralateral side: The radiopaque markers at the proximal limb should be aligned with the radiopaque markers at the flow divider of the Endurant™ II or Endurant™ IIs bifurs.

For the ipsilateral side: Depending on the limb configuration used, the radiopaque markers at the proximal end of the limb should be aligned to the distal radiopaque marker on the ipsilateral leg or the flow divider marker of the Endurant™ IIs bifur.

Select limbs will allow a 3-5 stent overlap adjustment during the case.

Please refer to the Instructions for Use for more information as needed.

Endurant™ II/IIs

AAA Stent Graft System

ENDURANT™ II/IIS STENT GRAFT SIZING GUIDELINES

Proximal Aortic Diameter (mm)		Proximal Stent Graft Size
Standard EVAR*	ChEVAR†	
19 - 20	n/a	23
21 - 22	19 - 20	25
23 - 25	21 - 23	28
26 - 28	24 - 26	32
29 - 32	27 - 30	36

Distal Iliac Diameter (mm)	Distal Stent Graft Size
8 - 9	10
10 - 11	13
12 - 14	16
15 - 18	20
19 - 22	24
23 - 25	28

Each Endurant™ II / IIs AAA stent graft system must be ordered in a size that is appropriate to fit the patient's anatomy.

Proper sizing of the Endurant™ II AAA stent graft system is the responsibility of the physician.

The above suggestions for stent graft diameters are based on vessel inner wall measurements.

* EVAR: Bifurs, Cuff, AUI, Tube configuration

† Limb, Iliac Extension configuration